

Flexible assembly of electro-mechanical relays

FCL Components Limited produced an equipment for technology-development purpose which corresponds to multiple kind of relays.

Sector

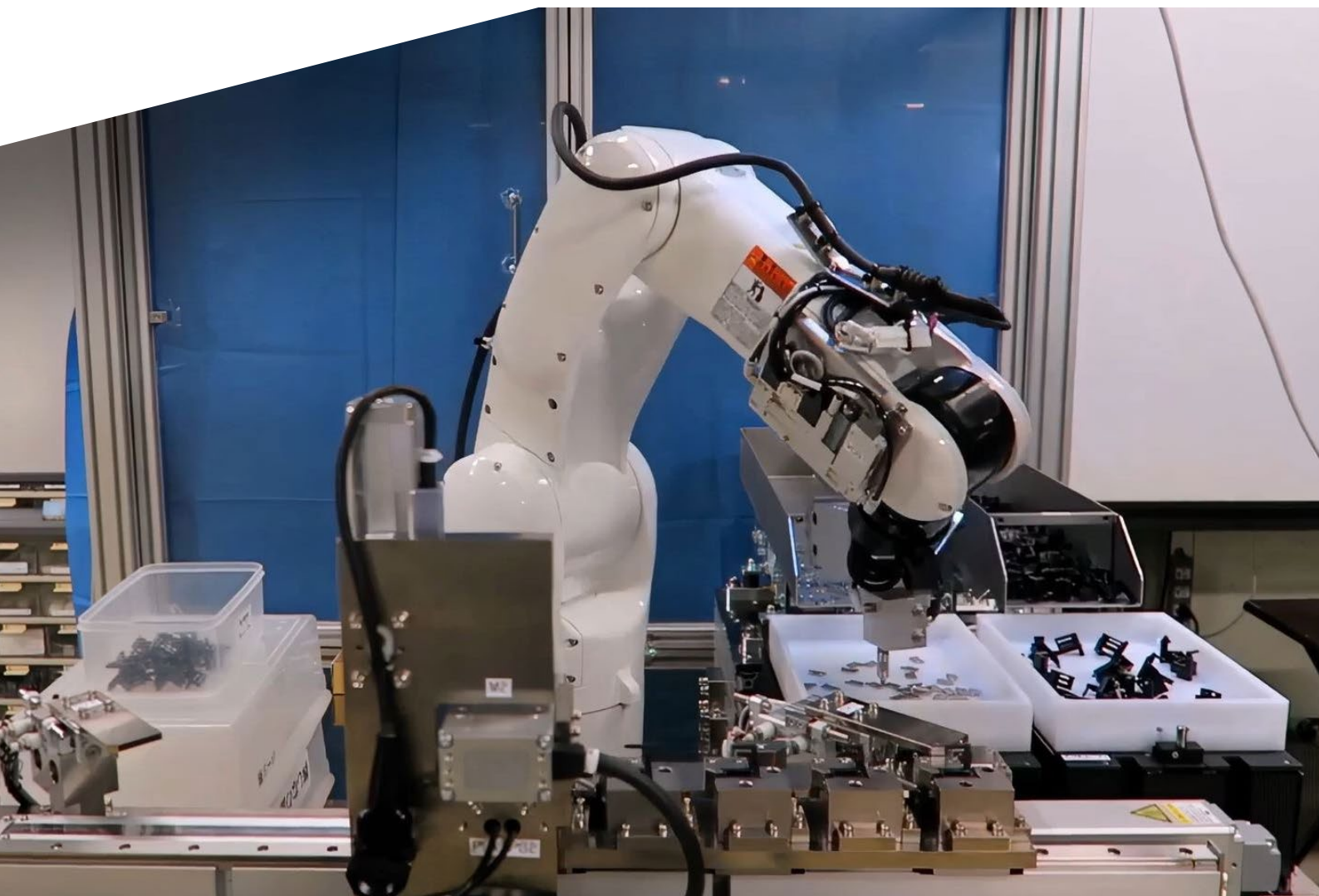


Automotive

Application



Assembly





3-Axis Vibration Technology
Innovation by asyril

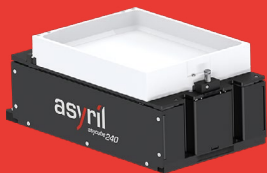
End customer



FCL COMPONENTS is an electric and electronic component manufacturer that provides a wide range of electric and electronic parts and modules, including relays, input-output devices, wireless products, and sensors. These components are for the industrial end market that is expected to grow continuously.

Integrated products

Two Asycube 240 flexible feeders



Flexible assembly of electro-mechanical relays

FCL Components Limited produced an equipment for technology-development purpose which corresponds to multiple kind of relays.

Challenge

- Relays are critical components used in many electric and electronic products. Ready to open or close on command at any moment, they need to be extremely reliable
- Traditional feeding solutions, such as bowl feeders, were no match when developing a flexible assembly line (general-purpose equipment) capable of manufacturing multiple kinds of relays

Solution

- Prototype of an equipment feeding the plastic parts and the metal parts
- Assembly equipment for FCL COMPONENTS relays using two Asycube 240 systems to feed the plastic parts and metal parts of the relays

Benefits

- Highly flexible solution enabling the assembly of multiple different relays on the same equipment thanks to the use of the Asycube flexible feeder
- Compact equipment for a complete process from bulk loading of both parts to assembly and assembled part removal



Click/Scan
to watch the video