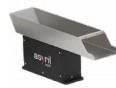


## Asyfill specifications



**Asyfill S 1L**



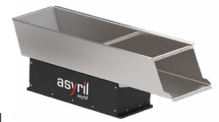
**Asyfill S 2L**



**Asyfill M 3L**

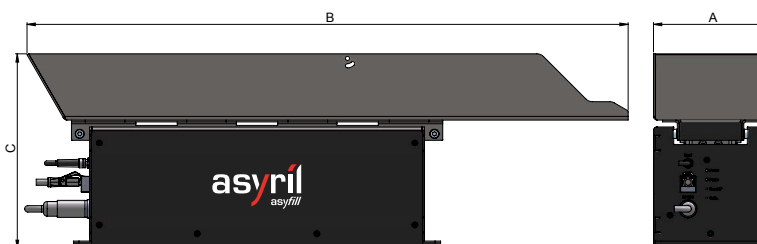


**Asyfill M 7L**



**Asyfill L 14L**

General information						
Container volume	1L	2L	3L	7L	14L	
Maximal admissible load	2 kg		12 kg		20 kg	
Power supply	24 VDC / 5 A		24 VDC / 10 A			
Connection cables	Power, communication and input					
Communication	Via the Asycube Analog interface					
Container material	Stainless steel 1.4301					
Pairing with Asycube	Asycube 240, 380 and 530				Asycube 380 and 530	
Dimensions						
Overall dimensions	A	88 mm / ~ 3.5"	112 mm / ~ 4.4"	124 mm / ~ 4.9"	159 mm / ~ 6.3"	254 mm / ~ 10.0"
	B	433 mm / ~ 17.0"	484 mm / ~ 19.1"	657 mm / ~ 25.9"	705 mm / ~ 27.8"	794 mm / ~ 31.3"
Total height	C	193 mm / ~ 7.6"	208 mm / ~ 8.2"	212 mm / ~ 8.4"	231 mm / ~ 9.1"	276 mm / ~ 10.9"
Weight		4.2 kg	4.2 kg	11.6 kg	11.6 kg	19.1 kg



More information in the online product user manual